

Large Plot in Pyrgi, Northeast Corfu

Reference: #NEPYRG5



This is without any doubt a perfect spot for a luxury villa development. A stunning plot of 20,000 sqm with 350 meters of sea frontage, the potential for a private jetty, and access to pretty coves below. It is in a wonderful area on the sought-after northeast coast and boasts magnificent open views of the sea and coastline towards Corfu Town as well as the mainland opposite.

Information

Price: Price on Demand

Location: North East

Category: Land

Description

Situated in the area between Ipsos and Barbati on the prestigious northeast coast, this seafront plot of 20,000 sqm is a rare find. It is approx. 16 km from Corfu Town and the airport and within easy reach of all amenities and the northeast coastal hotspots. The plot is full of a variety of trees, including olives and cypresses. Below are some wonderful little coves, with the potential to construct a jetty. A road within the plot has already been constructed giving easy access.

Characteristics

Land size: 20000m2

Exterior

View: Stunning Panoramic View Of The Sea ,coast Towards Corfu Town

Key features

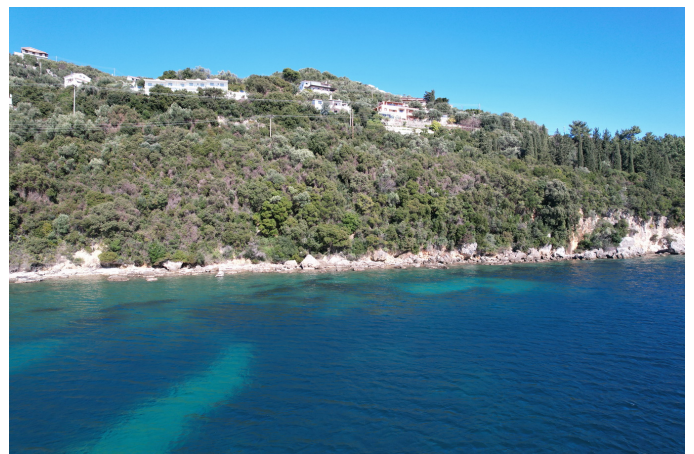
A rare to find property

Large frontage on the sea

Direct and private access to the sea and little bays

Ideal also for investment

Photo gallery





Notes

.....

.....

.....

.....

.....

.....

.....

.....

.....

.....

.....

.....

.....

.....

.....

.....

.....

Contact us

Mike Petsas

Tel: [+30 2661099216](tel:+302661099216) | [+30 6937 787776](tel:+306937787776)

Mail: info@corfuhomes.gr

Corfu Homes Real Estate Consultants

5th Km Palaiokastritsa National Road

49100 Kontokali, Corfu - Greece